

PHENOLOGICAL SCORING GUIDE FOR *AMSINCKIA*

Open Flower

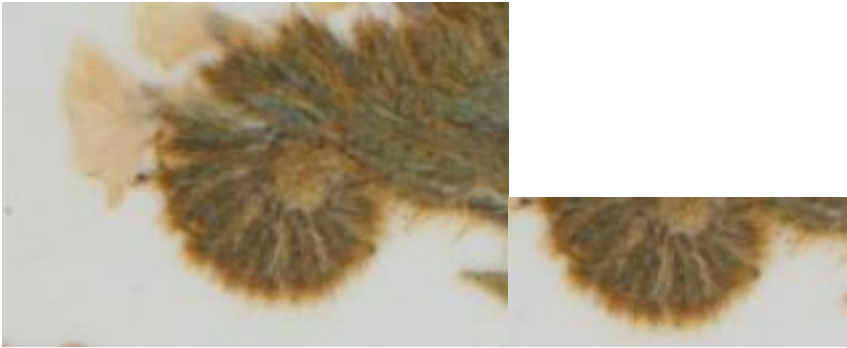


Shows relationship between open and unopen flowers, with unopen flowers present after the open flowers on the stem.



This shows the opening of flowers going up the coil. Even when barely visible, where the petals (orange) are present, flowers are open.

Unopen flowers



Unopen flowers present past open flowers on coiled stem



*Unopen flowers present past open flowers on coiled stem